

Adaptive. Effective. Affordable.

Your Mobile Ally Since 2003

D-TEG at a Glance

From a small working group within the DVR division of SK Global, D-TEG had spun off as a separate company in 2003, focusing on the technology for road safety and in-vehicle video/data recording, later teamed up the R&D center with the expert hardware and software engineers in 2005.

With 17 years of dynamic challenges and experience, D-TEG has established itself as one of the leading innovators in the mobile security industry and extended its business domain to mobile DVRs, Drive Recorders and various event recording devices. Proven reliability of sales and R&D capability has resulted in various commendable projects of the major metropolitan cities such as Tokyo, Nagoya, Hong Kong, Chicago, Seoul and Busan.

D-TEG prides itself in developing and manufacturing state-of-art in-vehicle digital recording and peripheral systems to notable ODM and distribution partners around the world such as Toshiba, Clarion and NEC.

Since 2014, D-TEG has turned around its business to IoT (Internet of Things) industry based on 3/4G transmission Drive Recorders, widely serving to telematics and insurance customers.

Through the remarkable co-work with giant carriers in US (Verizon, AT&T) and Japan (Docomo, KDDI), D-TEG has been providing a stable platform for numerous service packages to top tier market players. Furthermore, D-TEG is trying to expand the product portfolio with 5G & AI applications and enhance the service platform to meet various requirements of customers.

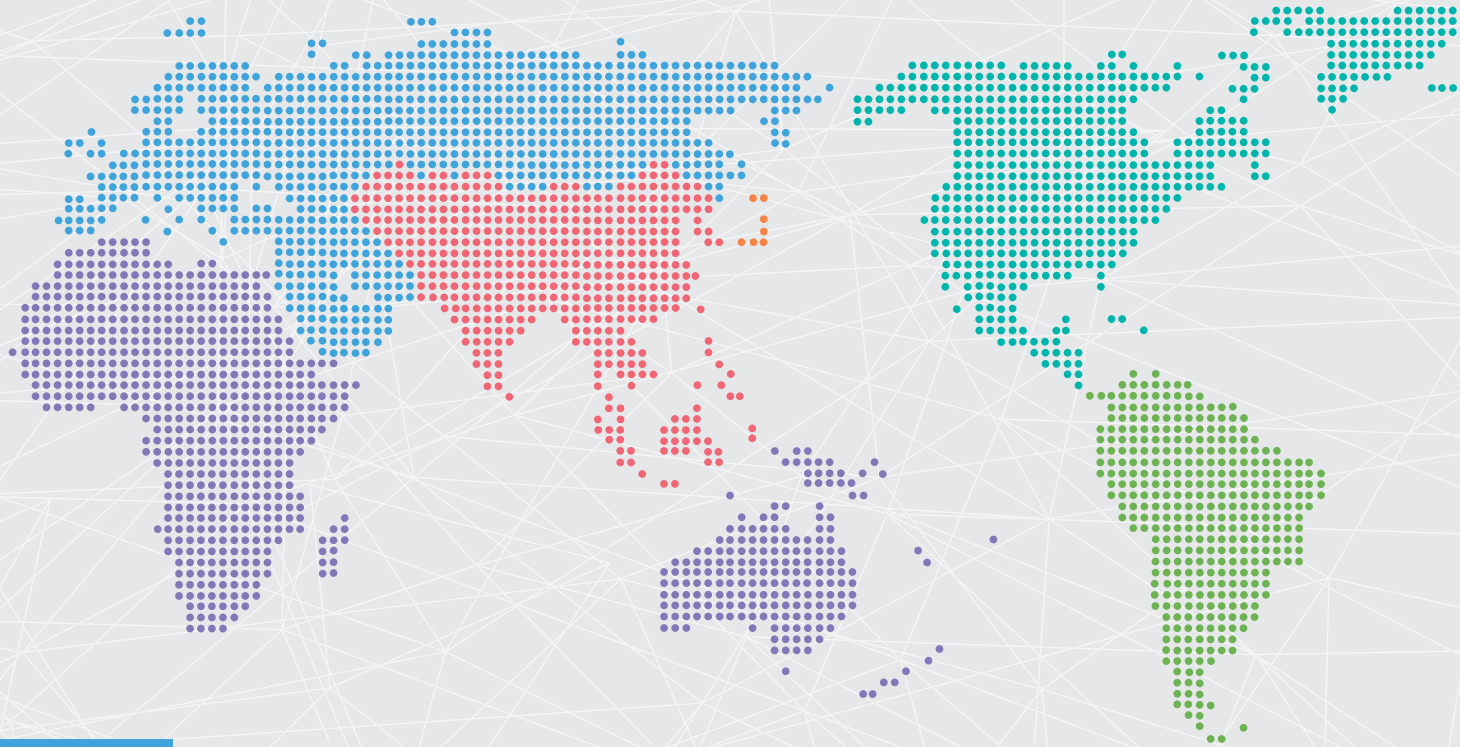
We are always eager to listen to voice of customers and continually reflect it by reinvesting in R&D manpower and resources. It is our endless mission to contribute to road safety and driver/passenger security with cutting-edge products and services.

Hoping to share the brighter future with our partners, we remain.

Thanks.

www.d-teg.com

Major Projects



EUROPE

#1 Selling Drive Recorder in UK

Police Patrol Cars in 8 UK Cities

Markerstudy Telematics Insurance Solution

Addison Lee Minicabs

UK Prison Transportation Vehicles

Allianz Insurance

AXA Insurance

Towergate Insurance

Chartis Insurance

Azerbaijani National Police Force

LATIN AMERICA

Cuenca City Transportation System

Forklifts for Coca-Cola Factory

Nuevo Central Argentino

Banco Estado

NORTH AMERICA

Verizon Connect fleet management system

Chicago Taxi Approved System

NYC TLC Approved System

Lancer Insurance Company

ATI Insurance Company

KOREA

#1 Selling Mobile DVR in Korea

Over 60 Bus Companies in South Korea

Over 40 Taxi Companies in South Korea

Seoul Metropolitan Transportation System

Seoul Metropolitan Town Bus System

Sejong City Transportation Bus Mgmt System

Busan Metropolitan Transportation System

Kumho Express Bus Line

Gyeonggi Province Transportation System

Gyeonggi Province Town Bus System

School Shuttle Buses

Hyosung ATM Machines

Armored Vehicles for Brinks

Louis Vuitton Korea

OTHER ASIA

Hong Kong KMB Bus

JAPAN

#1 Selling Drive Recorder in Japan

Over 30 Bus Companies in Japan

SJNK 「Smiling Road」 Service
-Telematics Insurance Solution

Zurich 「Z-Assist」 Service
-Telematics Insurance Solution

Tokyo Metropolitan Transportation System

Kyoto City Transportation System

Nagoya City Transportation System

Keikyu Bus Corp.(Narita, Haneda Airport Limousine)

Enshu Railway Line

Kansai Airport Monorail System

Kitakyushu Train and Tram Services

Kitakyushu Monorail System

Kumamoto Prefecture Transportation System

OCEANIA and AFRICA

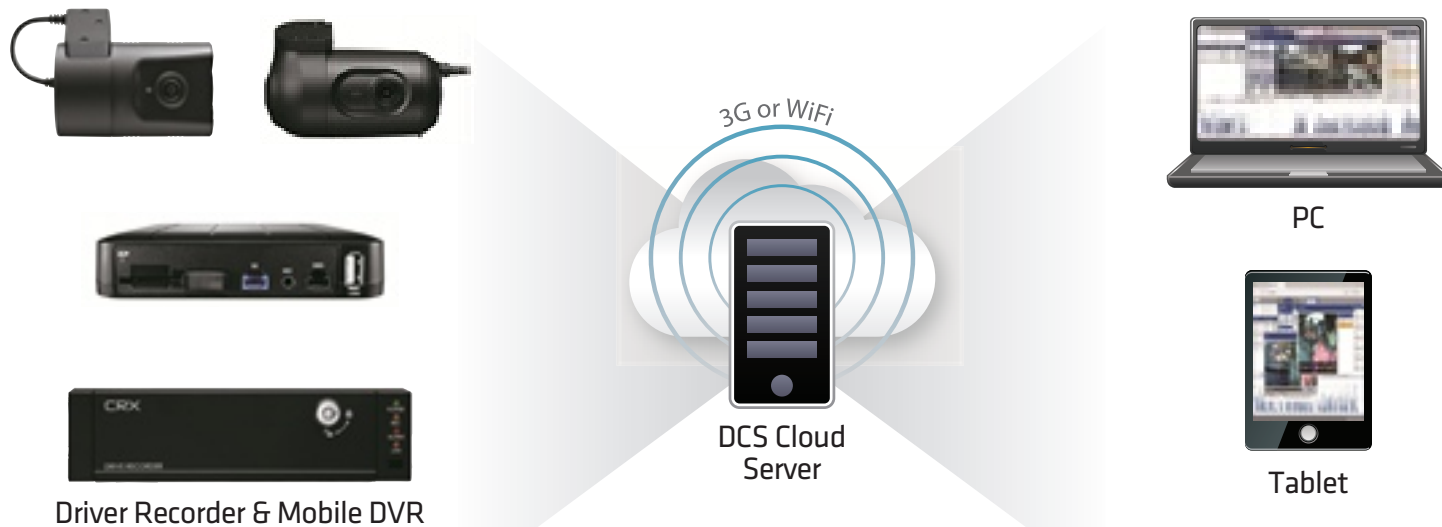
Mining Vehicles for De Beers

DHL South Africa

4 Trucking and Semi-trailer Companies

DCS Cloud Server & API

D-Teg provides cloud-base server system & API for the demands who want to manage their vehicles and fleets more efficiently. All drive recorders and mobile recorders can be connected to DCS cloud server for live-tracking, remote playback, and driver management.



Driver Recorder & Mobile DVR

- FHD Live Recording
- Live Streaming Images
- Video and Drive Data Recording
- Event Management
- Smart G-sensor and Gyro Sensor

DCS Cloud
Server

- Send command to units
- Firmware upload
- Configuration upload
- Receives tracking and image data
- Analyzes the driving data
- Create driving behavior reports
- Send email reports

PC



Tablet

DMS Web Application

- On-Demand HD video request
- Live stream & Live tracking
- Event Snapshot playback
- Check driving behavior reports

DCS Cloud Server & API | FEATURES

Live Tracking



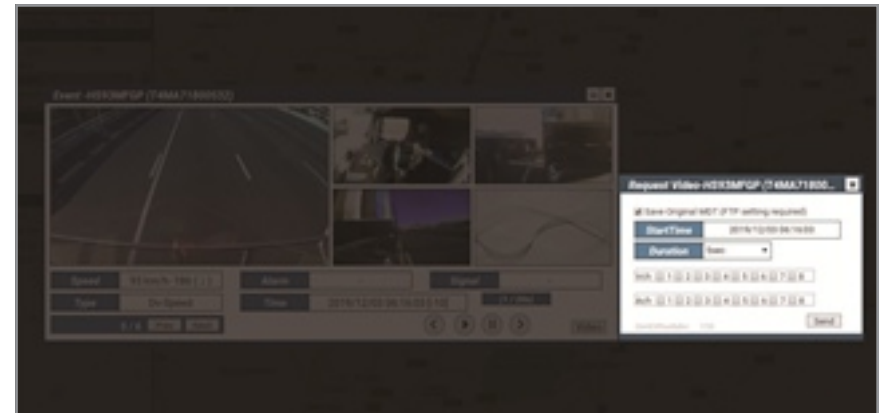
Daily Route History



Event Playback

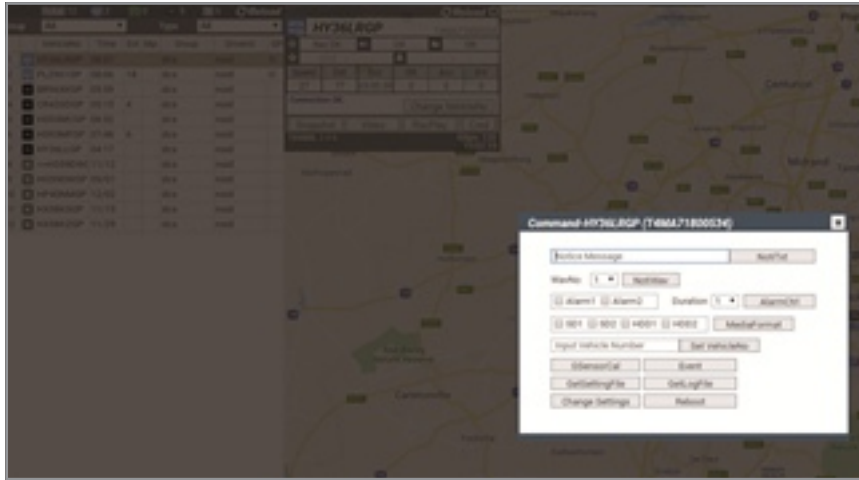


On-Demand HD video playback



DCS Cloud Server & API | FEATURES

Other Live Commands



Geo-Fences



Monthly Report



Daily Safety Report



Daily Driving & Health Report

DMSS Daily Driving Report												
[Smartets] - 2016/02/11												
Driving Status												
Idx	No	Group	Driver	SAFE	Last Rcr	S-Start	S-Accel	S-Brake	Event	Distance	Max Speed	Time
01	328A1769	TAXI	Kevin CHA	X	23:59	3	4	10	8	423km	126km/h	21:47
02	0006	Simul										
03	0001	Simul										
04	0004	Simul										
05	ABC1234	KP1										
06	-											
07	858A7000	KP1										
08	0011	Simul										
09	Santafe											
10	1111											
11	0015											
12	328A1792	TAXI	Hank LEE	X	23:59	1	2	11	16	476km	143km/h	17:48
13	328A1765	TAXI	Mina CHUNG	X	23:48	2	3	21	18	463km	125km/h	21:49
14	GalaGold001											
15	GalaGold002											
16	OfficeWiFi	WiFi										
17	ncxo_bst_001											
18	HUNGARY		Hungary_driver									
19	KP15											
20	clanion											
21	clanion											
22	GENET											
23	KSADemo											
24	KSATXDEMO											
25	V2Test											
26	TX3000											
27	demo	Clanion	bcl									
28	TX3000											
29	TX3000											

----- RESULT -----

Total : 29
 Unsafe Driving : 3
 Active : 3
 NoActive : 26

DMSS Daily Health Report

[Smartets] - 2016/02/11

Health Status

Idx	No	Group	Check	Record	CamLow	Media	FWVersion
01	328A1769	TAXI					KP1_2.3.0, PT[1]
02	0006	Simul					BRQ2008A_4.0.0, PT[1]
03	0001	Simul					BRQ2008A_4.0.0, PT[1]
04	0004	Simul					BRQ2008A_4.0.0, PT[1]
05	ABC1234	KP1					KP1_2.3.0.RC4, PT[1]
06	-						KP1_2.2.3, PT[1]
07	858A7000	KP1					KP1_2.2.4, PT[1]
08	0011	Simul					BRQ2008A_4.0.0, PT[1]
09	Santafe						KP1_2.2.5, PT[1]
10	1111						BRQ2008A_4.0.0, PT[1]
11	0015						BRQ2008A_4.0.0, PT[1]
12	328A1792	TAXI					KP1_2.3.0, PT[1]
13	328A1765	TAXI					KP1_2.3.0, PT[1]
14	GalaGold001						BQ2000_2.2.1, PT[3]
15	GalaGold002						BQ2000_2.2.1, PT[2]
16	OfficeWiFi	WiFi					KP1_2.3.0, PT[3]
17	ncxo_bst_001						BQ2000_2.2.2, PT[1]
18	HUNGARY						BQ2000_2.2.2, PT[1]
19	KP15						KP1_2.3.0.RC6, PT[1]
20	clanion						BQ2000_2.2.2, PT[3]
21	clanion						BQ2000_2.2.2, PT[3]
22	GENET						VT2000_1.0.0, PT[4]
23	KSADemo						KP1_2.3.0, PT[1]
24	KSATXDEMO						VT2000_1.1.0, PT[4]
25	V2Test						VT2000_1.1.1.RC4, PT[4]
26	TX3000						TX3000_1.1.1, PT[4]
27	demo	Clanion					BQ2000_2.2.2, PT[3]
28	TX3000						TX3000_1.1.1, PT[4]
29	TX3000						TX3000_1.1.1, PT[4]

----- RESULT -----

Total : 29
 Check Need : 0

----- DMSS Server -----

Memory: Peak:118948K, Cur:84252K, Avail: 4194303K (100.00) MaxSession: 4 Restart: 0

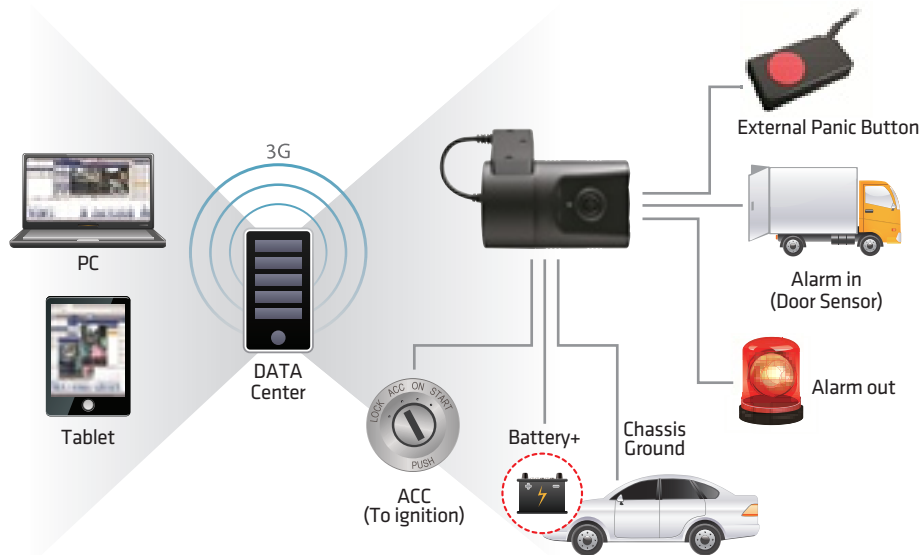
Daily driving and health report ensures efficient vehicle and driver management.

Smarty Drive Recorder

TX1000D



TX1000D System Diagram



TX1000D Features

Integrated Telit 3G cellular modem

WCDMA BAND1(2100MHz), BAND8(900MHz)

Security enhanced design

The sleek design has securely fixed cable connectors and lockable covers to ensure data protection

Intelligent DMS5 API for Live-stream images

API available for direct integration with Telematics software

1080p Full HD quality video recording

2.1MP Full HD recording captures images allowing you to enjoy finely detailed video

170° wide angle lens

Full view of road and merging lanes

Built-in GPS/GLONASS

Highly sensitive positioning solution for live vehicle tracking and reporting

Events notification

The system automatically notifies events with images and metadata

External Panic button

The system can be connected with an external Panic button

Audio recording

Internal omni-directional microphone captures clear audio recordings in sync with video

Delayed Power Shutdown

Control the duration of time, the unit stays powered and recording & communication with server after shutdown

Event, continuous and dual mode recording

Different recording modes can be set for different uses and data needs

Professional analysis software

Play back, AVI conversion, analysis, back up, and many more functions can be performed on the PC viewer program Windows 8/10 compatible

Privacy

Passwords can be set to limit people who can view the data safeguarding private information

Smart G-sensor and Gyro sensor

G-sensor information is presented in a simple graph making it easier to find impact time

Self check and notification

The system automatically preforms health check and send notifications to operators

Driving Data

Data on speed, location, abrupt accelerations, sudden turns are recorded in the log files

Google™ Map 3.0 and Google™ Earth licensed

Google™ Map is embedded into the PC Viewer program and Google™ Earth will automatically launch accessed

TX1000D Specification

Camera	Image sensor	3 Megapixel color CMOS
	Angle of View	170° (horizontal: 139.5°, vertical: 71.5°)
	2nd camera input	No
Audio	Built-in microphone	Yes
	Compression	G.711
Video	Recording resolution	Main camera: 1920x1080, 1280x720, 640x480
	Recording Frame rate	Total: Max 30fps
	Recording mode	Continuous mode
		Event mode (G-sensor, Panic button, Alarm) Dual (Continuous + Event) mode
	Recording time	Event mode: before 20 (15, 10, 5) seconds after 20 (15, 10, 5) seconds Continuous mode: Min 130minutes ~ Max 217hours
Compression	Video: H.264	
GNSS	GPS/GLONASS	Support GPS/Glonass satellite, Output rate: 1Hz, CEP: $\leq 2.5m$, Accuracy of Velocity: $\leq 0.1m/s$ (GNSS module spec.) TTFF: within 1 min after boot (open sky)
Sensors	G-Sensor	3Axis(X,Y,Z), Output rate: 100 Hz Measurement Range: -2G ~ +2G Sensitivity: 1024LSB/g Accuracy: $\pm 140mg$
	Gyro	3Axis(X,Y,Z), Output rate: 100 Hz Measurement Range: $\pm 125^\circ/s$ Sensitivity: 262.4LSB/ $^\circ/s$ Accuracy: $\pm 2.05^\circ/s$
Backup Power	Super Capacitor	Enable recording last file and shut down
Time	RTC	Internal battery
Sound	Speaker	Recording start, Error
Storage	SD Card	SDHC (4GB~32GB) x 1 slot
User interface	LED	Rear 2 LED (Blue, Green), Front 1 LED (Blue)
	Button	2 pcs (Panic button, Calibration button)
Communication	3G	Built-in 3G module
	Band support	WCDMA Band I(2100MHz)/Band VIII(900MHz), GSM/GPRS
	Max Data Rate	UL: 5.76Mbps, DL: 7.2Mbps
	Mini SIM card	1 slot
	API	Support DMS5 API
Interface	Video Output	No
	Alarm Input	Power Adaptor: 2
	Alarm Output	Power Adaptor: 1
	Signal input	Power Adaptor: ACC
Software	PC software	PC Viewer for Windows 8/10
	DMS Server software	DMS5 Server for Windows 8/10 (optional)
Power	Power Input	Input Voltage: 5V Input Current: 3A
	Power Type	Cigar Jack, Bare wire cable: Input DC 12V/24V 2A Output: DC 5V, 3A Power Adaptor: Input: DC 12/24V, 2A, Output: DC 5V, 3A
	Max Power Consumption	15W
Lock	Locking enclosure	SD Slot/Mini SIM slot Cover and Torx Screw
Dimension	Size/Weight	91mm x 56 \varnothing , 206g
Environment	Operation temperature	-10 ~ +55 $^\circ C$
	Storage temperature	-20 ~ +70 $^\circ C$
Standards	Certification	CE, E-mark

TX1000D

All-in-One(Video+Telematics) Drive Recorder

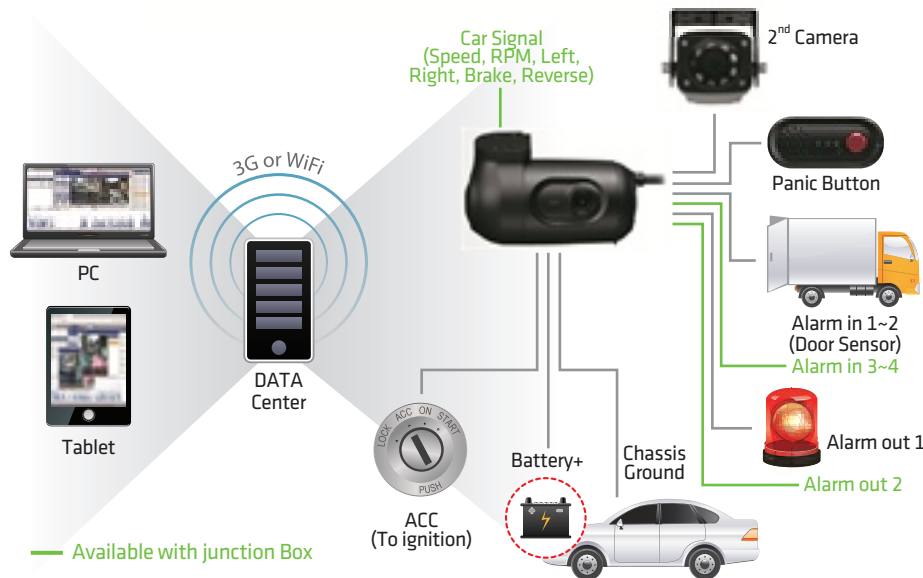
A 1ch 3G enabled Telematics Drive Recorder with GPS/GLONASS, G-Shock/Gyro Sensor, Full HD video quality, Audio recording, SD storage and Locking SD cover.



Smarty Drive Recorder TX2000



TX2000 System Diagram



TX2000 Features

Integrated Telit 3G cellular modem

WCDMA BAND1(2100MHz), BAND8(900MHz)

Security enhanced design

The sleek design has securely fixed cable connectors and lockable covers to ensure data protection

Intelligent DMS5 API for Live-streaming images

API available for direct integration with Telematics software

1080p Full HD quality video recording

2.1MP Full HD recording captures images allowing you to have finely detailed video

2 Channel Video recording

Optional camera can be used

Built-in GPS/GLONASS/QZSS

Highly sensitive positioning solution for live vehicle tracking and reporting

Events notification

The system automatically notifies events with images and metadata

Vehicle Signals

Connect vehicle inputs: Speed pulse, RPM, left/right turn signal, brakes, reverse, ACC

Audio recording

Internal omni-directional microphone captures clear audio recordings in sync with video

Delayed Power Shutdown

Control the duration of time, the unit stays powered and recording & communication with server after shutdown

Event, continuous and dual mode recording

Different recording modes can be set for different uses and data needs

Professional analysis software

Play back, AVI conversion, analysis, back up, and many more functions can be performed on the PC viewer program Windows 8/10 compatible

Privacy

Passwords can be set to limit people who can view the data, safeguarding private information

Smart G-sensor and Gyro sensor

G-sensor information is presented in a simple graph, making it easier to find impact time

Self check and notification

The system automatically preforms health check and send notifications to operators

Driving Data

Data on speed, location, abrupt accelerations, sudden turns are recorded in the log files

Google™ Map 3.0 and Google™ Earth licensed

Google™ Map is embedded into the PC Viewer program and Google™ Earth will automatically be accessed

TX2000 Specification		
Size(mm)		91x56x56 (w/o Bracket, Cap)
Weight(g)		153 (w/o cable, SD card and SIM card)
Camera	Resolution	Video : FHD (1920x1080)
	Angle of veiw	[16:9] D : 150°, H : 121.1°, V : 62.4° ±5% / [4:3] D : 130°, H : 100°, V : 62.4° ±5%
	2nd camera	D1 (analog)
Storage	SD card	SDHC(4GB~32GB) / SDXC(64GB~128GB) x 1slot(Support only bundled SD card)
	G sensor	3Axis(X,Y,Z), output rate : 100 Hz, Measurement Range : -4G~+4G, Sensitivity : 512LSB/g, Accuracy : ±140mg
	Gyro	"3Axis(X,Y,Z), output rate:100 Hz, Measurement Range:125°/s Sensitivity : 262.4LSB/°/s, Accuracy : ±2.05°/s"
	GNSS	Support GPS / Glonass / QZSS satellite, output rate : 1Hz, CEP : ≤ 2.5m, Accuracy of Velocity: ≤ 0.1m/s (GNSS modul spec.) TTFF : within 1 min after boot (open sky)
Audio /Video	Speaker	1
	MIC	Support
	Vide out port	Not support
User interface	LED	3 : Record (Blue), Communication (Green), Warning (Red)
	Button	2 : Record button, Reset button
Alarm (power Adaptor)	IN	2
	OUT	1
Alarm (Junction box)	IN	4
	OUT	2
	Car signal	4 (Left, Right, Brake, Reverse)
	Car pulse	2 (speed, RPM)
Communication	3G	Built-in
	Wifi	Built-in
	Bluetooth	Built-in
Power	Power spec	DC 12V/24V for vehicles with a negative ground
		Input Voltage : 5V
		Input Current : 3A
		Wattage(W) : 15W
Accessory	Power type	Power Adaptor
		Junction box
		cigar cable
Environment	operating temperature	-10°C ~ +55°C
	storage temperature	-20°C ~ +70°C
OS		Embedded Linux 3.10
Video Codec		H.264, JPEG
Audio Codec		PCM
Port		SD card slot x 1 (Push-Push), Mini SIM card Slot x 1 (Push-Push), USB port
Application	Record Mode	Continuous / Event / Dual
	Record Data	Video, Audio, GPS, G-sensor, Gyro, Driving data
	Event	G-sensor, Panic, Speed over, *Alarm in, Parking mode, System warning, *Car signal
	Network Service	DMS5
Certification		CE, E-mark, FCC, GCF, PTCRB

TX2000

All-in-One(Video+Telematics) 2ch Drive Recorder

A 2Ch 3G, WiFi & Bluetooth enabled Telematics Drive Recorder with GPS/ GLONASS/QZSS, G-Shock/Gyro Sensor, Full HD video quality, Audio recording, SD storage and Locking SD cover.



Smarty Drive Recorder

TX4000LE



TX4000LE Features

4 Channel Video recording

AHD camera(720P, 1080P) and SD cameras can be used

Integrated LTE modem

LTE B1/ B3/ B7/ B8/ B20/ B28A /B38 /B40 /B41

Security enhanced design

The sleek design has securely fixed cable connectors and lockable covers to ensure data protection

Intelligent DMS5 API for Live-streaming images

API available for direct integration with Telematics software

1080p Full HD quality video recording

2.1MP Full HD recording captures images allowing you to have finely detailed video

GPS/GLONASS/QZSS

Highly sensitive positioning solution for live vehicle tracking and reporting

Events notification

The system automatically notifies events with images and metadata

Vehicle Signals

Connect vehicle inputs: Speed pluse, RPM, ACC

4 Alarm In and 1 Alarm Out

Connect alarm in to car horn, door opening, taxi meter, emergency lights etc.

Delayed Power Shutdown

Control the duration of time, the unit stays powered and recording & communication with server after shutdown

External Panic button

The system can be connected with an external Panic button

Audio recording

Internal & external microphone captures clear audio recordings in sync with video

Event, continuous and dual mode recording

Different recording modes can be set for different uses and data needs

Professional analysis software

Play back, AVI conversion, analysis, back up, and many more functions can be performed on the PC viewer program Windows 8/10 compatible

Privacy

Passwords can be set to limit people who can view the data, safeguarding private information

Smart G-sensor and Gyro sensor

G-sensor information is presented in a simple graph, making it easier to find impact time

Self check and notification

The system automatically preforms health check and send notifications to operators

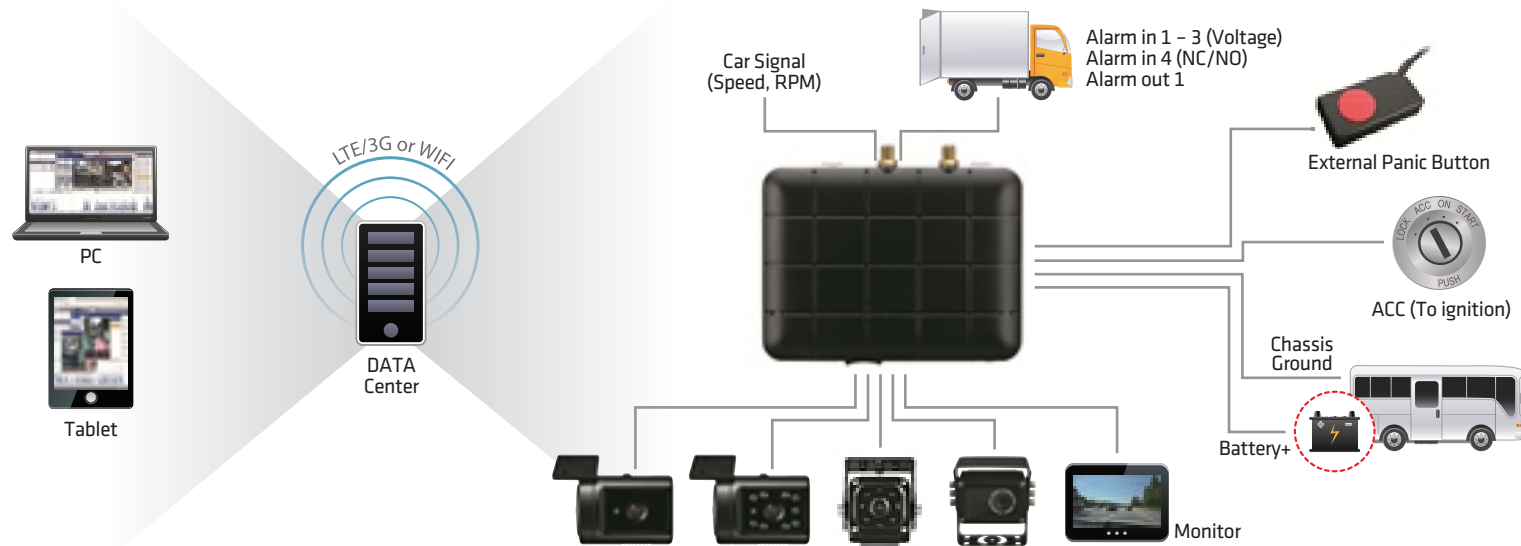
Driving Data

Data on speed, location, abrupt accelerations, sudden turns are recorded in the log files

Google™ Map 3.0 and Google™ Earth licensed

Google™ Map is embedded into the PC Viewer program and Google™ Earth will automatically be accessed

TX4000LE System Diagram



TX4000LE Specification

Size(mm)		System size(mm) : 90x120x28 (Metal cover size : 125x147.5x36)	
Weight(g)		166.5g(System) / 48g(SW KIT) / 427g(Metal Cover-Include Key)	
Camera	Resolution	(1) FHD(1920x1080) x 2 Channel : Max Total 30 fps (2) HD x 3 channels(total 45 fps) + D1 x 1 channel(30 fps) (3) D1(720x480, 720x576) x 4 Channel : : Max Total 120 fps	
	SD Card	SDHC/SDXC, 1 Slot	
Sensor	G-sensor	3 Axis(X,Y,Z), output rate: 100 Hz, Measurement Range: -4G ~ +4G Sensitivity : 512LSB/g Zero-g offset : ±70mg	
	Gyro	3 Axis(X,Y,Z), output rate: 100 Hz, Measurement Range : ±125°/s Sensitivity : 262.4LSB/°/s	
Positioning	GNSS	Support GPS/Glonass/QZSS satellite, Data output rate: 1Hz CEP: 2.5m, Accuracy of Velocity: 0.1m/s TTFF: within 1 min after boot	
Audio/Video	Buzzer	1	
	MIC	1 (External/Internal)	
	Audio/Video Out	HP out / CVBS	
Communication	LTE	Built-in LTE module (External antenna)	
		LTE-FDD	B1/ B3/ B7/ B8/ B20/B28A
		LTE-TDD	B38/ B40/ B41
		WCDMA	B1/ B8
	Wi-Fi / Bluetooth	Support USB Dongle Type	

User interface	LED	3 : Warning LED(Red), Record LED(Blue), Communication LED(Green)
	Button	3 : Panic Button, M1 Button, M2 Button
Power	Power spec	DC 12V/24V
	operating temperature	-10°C ~ +55°C
Environment	storage temperature	-20°C ~ +70°C
	OS	Embedded Linux
Audio Codec		PCM
Interface	"SD card slot x 1 A/V out x 1 External MIC In x 1 USB slot x 2 (USB 2.0 OTG: Type A, USB 2.0 Host) Serial x 2 (OBDII, GNSS) Video In x 4 (Extension cable) Switch Kit Signal: Alarm In x 3 / Alarm Out x 2 / RPM / Speed DC-in x 1 (B+, GND, ACC) SIM Slot x 1 (Mini-SIM)"	
	Record Mode	Continuous/Event/Dual
	Record Data	Video, Audio, GPS, G-sensor, Gyro, Driving data
	Event	G-sensor, Panic, Speed over, Alarm in, Parking, System warning, Car signal
	Network Service	DMS5
	A/V out	Video Live out, Voice guidance
	Miscellany	"G-sensor calibration, High temperature protection, GPS time sync, DST, Encryption(AES)"
Certification	GCF, CE / E-Mark, FCC	

CRX3108



CRX3108 Features

8 Channel Video recording

5MP, 4MP, 3MP, 1080P, 720P cameras can be used. Support AHD/TVI/CVI cameras

8 Channel Audio recording

Clear audio recordings in sync with video

3G/LTE or Wi-Fi Service

3G/LTE Service can be utilized with an activated USIM and USB modem or Wi-Fi dongle

Security enhanced design

The sleek D-TEG design is complimented by fixed cable connections and lockable cover

HDD or SSD storage and 1 SD card slot

2TB local storage capacity and duplication of recorded data with a SD card

Intelligent DMS5 API for Live-stream images

API available for direct integration with Telematics software

5MP quality video recording

5Mega Pixel recording captures images allowing you to enjoy finely detailed video

External GPS/GLONASS

Highly sensitive positioning solution for live vehicle tracking and reporting

Events notification

The system automatically notifies events with images and metadata

Delayed Power Shutdown and auto wake up by time setting

Control the duration of time, the unit stays powered and recording & communication with server after shutdown and wake up automatically as scheduled

6 Serial ports

Simultaneously connect multi-external device like ADAS, Driver Monitoring System, Tachometer, EMS warning, IR remote controller, RF-ID reader etc.

Vehicle Signals

Connect vehicle inputs: Speed pulse, RPM, left/right turn signal, brakes, reverse, ACC

8 Alarm in and 2 Alarm out

Connect alarm in to external panic button, car horn, door opening, taxi meter, emergency lights, ADAS, Driver Monitoring System etc.

Event, Continuous and Dual mode recording

Different recording modes can be set for different uses and data needs

Professional analysis software

Play back, AVI conversion, analysis, back up and many more functions can be performed on the PC viewer program Windows 8/10 compatible

Privacy

Passwords can be set to limit people who can view the data safeguarding private information. The mosaic function able you to mosaic specific area (such as a face of people)

Smart G-sensor and Gyro sensor

G-Sensor information is presented in a sample graph making it easier to find impact time

Self-check and notification

The system automatically preforms health check and send notifications to operators

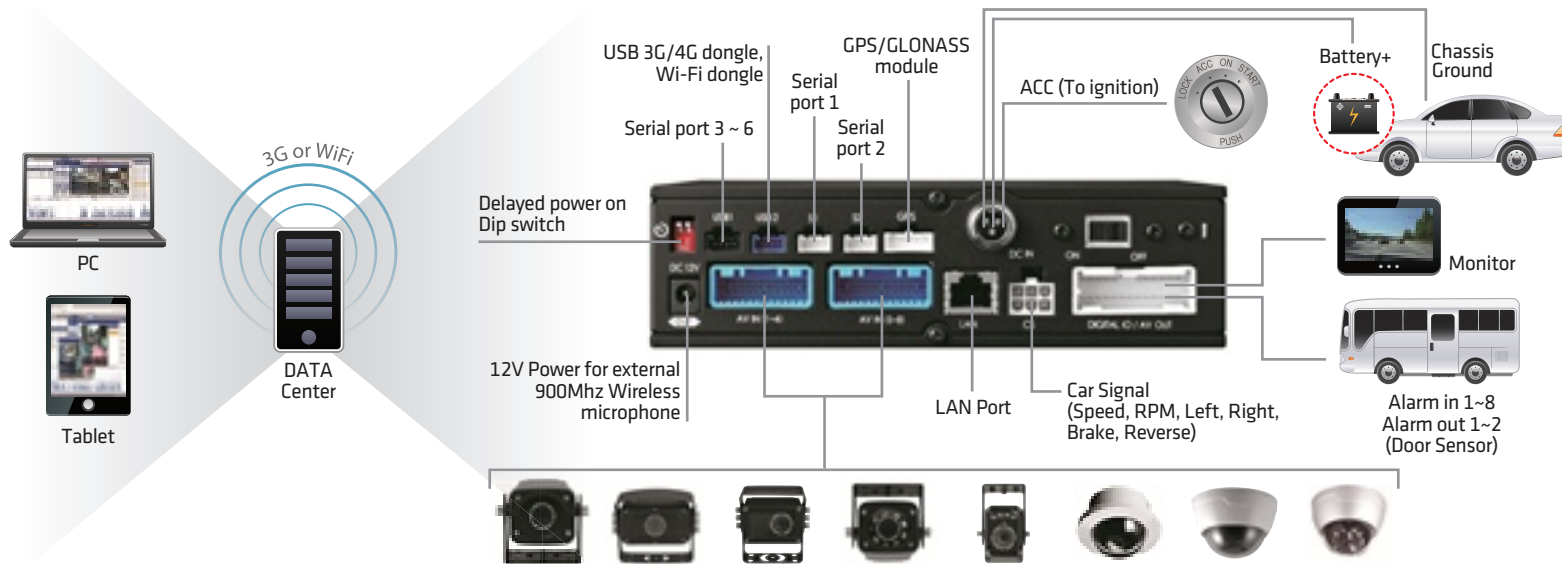
Driving Data

Data on speed, location, abrupt accelerations, and sudden turns are recorded in the log files

Google Map 3.0 and google Earth licensed

Google Map is embedded into the PC viewer program and Google Earth will automatically launch accessed

CRX3108 System Diagram



CRX3108 Specification

Camera	Input	8 channels (12V camera in)
	Type	5M(2592x1944), 4M(2560x1440), 3M(2048x1536) Full HD(1920x1080), AHD(1280x720), WD1(960x480), SD(720x480)
Audio	Input	8 channels
	Compression	8KHz ADPCM(u-Law)
Video	Recording resolution	AHD: 2592x1944, 2560x1440, 2048x1536, 1920x1080, 1280x720 TVI: 2560x1944, 2560x1440, 2048x1536, 1920x1080, 1280x720 CVI: 1920x1080, 1280x720 NTSC: 960x480, 720x480, 720x240, 352x240 PAL: 960x575, 720x576, 720x288, 352x288
	Recording Frame rate	AHD: 24fps(2592x1944), 60fps(2560x1440), 72fps(2048x1536), 180fps(1920x1080), 240fps(1280x720) TVI: 24fps(2560x1944), 60fps(2560x1440), 72fps(2048x1536), 180fps(1920x1080), 240fps(1280x720) CVI: 180fps(1920x1080), 240fps(1280x720) NTSC: 240fps (960x480, 720x480, 720x240, 352x240) PAL: 200fps (960x575, 720x576, 720x288, 352x288)
	Recording Mode	Continuous mode Event mode (G-sensor, Panic button, Alarm) Dual (Continuous + Event) mode
	Recording time	Event: before 5~1 seconds after 1hour~10 seconds Continuous: long-term recording with HDD
	Compression	Video: H.264
	GNSS	GPS/GLONASS
Sensors	G-Sensor	•3Axis(X,Y,Z) •output rate: 100 Hz •Accuracy: $\pm 140mg$ •Measurement Range: -2G~+2G •Sensitivity: 1024LSB/g

Sensors	Gyro	•3Axis(X,Y,Z) •output rate:100 Hz •Accuracy: $\pm 2.05^\circ/s$ •Measurement Range: $125^\circ/s$ •Sensitivity: 262.4LSB/ $^\circ/s$
Time	RTC	Internal battery
Sound	Buzzer	Error, Firmware upgrade, Configuration upload.
Storage	Main	2.5" HDD(500GB, 1TB, 2TB) or SSD(128GB, 256GB) x 1 slot
	SD Card	Support FAT32 or EXT4 (8GB~128GB) x 1 slot
User interface	LED	4 LED (Red, Orange, Blue, Green)
	Button	10 pcs
Communication	USB Type	By USB 3G/4G or Wi-Fi modem (optional)
	API	Support DMS5 API
Interface	Video Output	2 (Front, Rear)
	Alarm Input	8 (4 Port (NC/NO), 4 Port (Signal))
	Alarm Output	2 (2 Port (NC/NO))
	Signal input	Left, Right, Brake, Reverse, Speed Pulse, RPM, ACC
Software	PC software	PC Viewer for Windows 8/10
	DCS Server	Google Cloud Server (www.vehiclets.com)
Power	Power Input	Input Voltage: 12V/24V, Input Current: 8A/4A
	Power Output	2pcs (Front, Rear), Output Voltage: DC 12V 1A
	Power Type	Bare wire cable: Input DC 12V/24V 3A
Lock	Max Power Consumption	96W
	Locking enclosure	HDD/SSD Key Lock and Front Door Key Lock
Dimension	SD Card Cover	SD mount/unmount Switch Cover
	Size/Weight	1DIN: 178(w)x50(H)x170(D)mm, 1.08kg(with SSD), 1.14kg(with HDD)
Environment	Operation temperature	-10 ~ +60°C(SSD), -10 ~ +45°C(HDD)
	Storage temperature	-20 ~ +70°C
Standards	Certification	CE, E-mark, KC

Outdoor Rear View Cameras



Water Proof (IP 69K)
59.2*62*56(mm)



Water Proof (IP 69K)
79*76*54(mm)
Microphone
[Available on Request]



Water Proof (IP 69K)
68*80*60(mm)
Microphone
[Available on Request]

Model	Resolution	Lens	Power	Model	Resolution	Lens	Power	Model	Resolution	Lens	Power
STR-230HE	700 TV Lines	120°/90°	DC 5V/12V~24V	STR-300HE	700 TV Lines	145°/120°/90°	DC 5V/12V~24V	STR-500HE	700 TV Lines	160°/120°/90°	DC 5V/12V~24V
STR-230AHD	1.3 MEGA	120°/90°	DC 5V/12V~24V	STR-300AHD	1.3 MEGA	145°/120°/90°	DC 5V/12V~24V	STR-500AHD	1.3 MEGA	145°/120°/90°	DC 5V/12V~24V
STR-230FAHD	2.1 MEGA	120°/90°	DC 5V/12V~24V	STR-300FAHD	2.1 MEGA	120°/90°	DC 5V/12V~24V	STR-500FAHD	2.1 MEGA	120°/90°	DC 5V/12V~24V



Water Proof (IP 69K)
37*50*42(mm)



Water Proof (IP 69K)
61*72*70(mm)



Water Proof (IP 69K)
35.4*32*48(mm)

Model	Resolution	Lens	Power	Model	Resolution	Lens	Power	Model	Resolution	Lens	Power
STR-800	520 TV Lines	145°/120°/90°	DC 5V/12V~24V	STR-900HE	700 TV Lines	130°/90°	DC 5V/12V~24V	STR-1000	800 TV Lines	145°	DC 12V~24V
STR-800AHD	1.3 MEGA	120°/90°	DC 5V/12V~24V	STR-900AHD	1.3 MEGA	120°/90°	DC 5V/12V~24V	STR-1000AHD	1.3 MEGA	145°	DC 12V~24V
STR-800FAHD	2.1 MEGA	120°/90°	DC 5V/12V~24V	STR-900FAHD	2.1 MEGA	120°/90°	DC 5V/12V~24V				

Outdoor Rear View IR Cameras



Water Proof (IP 69K)
59.2*62*56(mm)



Water Proof (IP 69K)
79*76*54(mm)
Microphone [Available on Request]

Model	Resolution	Lens	Power	Model	Resolution	Lens	Power
STR-230HEIR	700 TV Lines	120°/90°	DC 5V/12V~24V	STR-300HEIR	700 TV Lines	145°/120°/90°	DC 5V/12V~24V
STR-230AHDIR	1.3 MEGA	120°/90°	DC 5V/12V~24V	STR-300AHDIR	1.3 MEGA	145°/90°	DC 5V/12V~24V
STR-230FAHDIR	2.1 MEGA	120°/90°	DC 5V/12V~24V	STR-300FAHDIR	2.1 MEGA	120°/90°	DC 5V/12V~24V



Water Proof (IP 69K) / 68*80*60(mm)
Microphone [Available on Request]



Water Proof (IP 69K)
37*50*42(mm)

Model	Resolution	Lens	Power
STR-500HEIR	700 TV Lines	160°/120°/90°	DC 5V/12V~24V
STR-500AHDIR	1.3 MEGA	145°/120°/90°	DC 5V/12V~24V
STR-500FAHDIR	2.1 MEGA	120°/90°	DC 5V/12V~24V

Model	Resolution	Lens	Power
STR-800IR	520 TV Lines	145°/120°/90°	DC 5V/12V~24V
STR-800AHDIR	1.3 MEGA	120°/90°	DC 5V/12V~24V
STR-800FAHDIR	2.1 MEGA	120°/90°	DC 5V/12V~24V



Water Proof (IP 69K)
61*72*70(mm)



Water Proof (IP 69K)
40*40*47(mm)

Model	Resolution	Lens	Power
STR-900HEIR	700 TV Lines	130°/90°	DC 5V/12V~24V
STR-900AHDIR	1.3 MEGA	120°/90°	DC 5V/12V~24V
STR-900FAHDIR	2.1 MEGA	120°/90°	DC 5V/12V~24V

Model	Resolution	Lens	Power
STR-600AHDIR	1.3 MEGA	120°/90°	DC 5V
STR-600FAHDIR	2.1 MEGA	120°/90°	DC 5V

Indoor Rear View Cameras



In Door Camera
40*44*28



In Door Camera
81*61*51

Model	Resolution	Lens	Power
STR-150HE	700 TV Lines	145°/120°/90°	DC 5V/12V~24V

Model	Resolution	Lens	Power
STR-950HE	700 TV Lines	145°/120°/90°	DC 5V/12V~24V
STR-950AHD	1.3 MEGA	120°/90°	DC 5V/12V~24V
STR-950FAHD	2.1 MEGA	120°/90°	DC 5V/12V~24V



In Door Camera
45.5*40.5*42.8



In Door Dome Camera
80 Ø *60

Model	Resolution	Lens	Power	Model	Resolution	Lens	Power
DTR-150	520 TV Lines	145°/120°/90°	DC 5V/12V~24V	STC-300HE	700 TV Lines	145°/120°/90°	DC 12V
DTR-150AHD	1.3 MEGA	130°/90°	DC 5V/12V~24V	STC-300AHD	1.3 MEGA	120°/90°	DC 12V
DTR-150FAHD	2.1 MEGA	120°/90°	DC 5V/12V~24V	STC-300FAHD	2.1 MEGA	120°/90°	DC 12V

Indoor Rear View IR Cameras



In Door IR Camera
40*44*28



In Door IR Camera
81*61*51

Model	Resolution	Lens	Power	Model	Resolution	Lens	Power
STR-150HEIR	700 TV Lines	145°/120°/90°	DC 5V/12V~24V	STR-950HEIR	700 TV Lines	145°/120°/90°	DC 5V/12V~24V
				STR-950AHDIR	1.3 MEGA	120°/90°	DC 5V/12V~24V
				STR-950FAHDIR	2.1 MEGA	120°/90°	DC 5V/12V~24V









In Door IR Camera
45.5*40.5*42.8(mm)



In Door IR Dome Camera
80 Ø *60

Model	Resolution	Lens	Power	Model	Resolution	Lens	Power
DTR-150IR	520 TV Lines	145°/120°/90°	DC 5V/12V~24V	STC-300HDIR	700 TV Lines	145°/120°/90°	DC 12V
DTR-150AHDIR	1.3 MEGA	120°/90°	DC 5V/12V~24V	STC-300AHDIR	1.3 MEGA	120°/90°	DC 12V
DTR-150FAHDIR	2.1 MEGA	120°/90°	DC 5V/12V~24V	STC-300FAHDIR	2.1 MEGA	120°/90°	DC 12V

Outdoor Rear View Cameras WaterProof (IP 69K)						
	SD	STR-230HE	STR-300HE	STR-500HE	STR-800	STR-900HE
HD	STR-230AHD	STR-300AHD	STR-500AHD	STR-800AHD	STR-900AHD	STR-1000AHD
FHD	STR-230FAHD	STR-300FAHD	STR-500FAHD	STR-800FAHD	STR-900FAHD	

Outdoor Rear View IR Cameras WaterProof (IP 69K)						
	SD	STR-230HEIR	STR-300HEIR	STR-500HEIR	STR-800IR	STR-900HEIR
HD	STR-230AHDIR	STR-300AHDIR	STR-500AHDIR	STR-800AHDIR	STR-900AHDIR	STR-600AHDIR
FHD	STR-230FAHDIR	STR-300FAHDIR	STR-500FAHDIR	STR-800FAHDIR	STR-900FAHDIR	STR-600FAHDIR

Indoor Rear View Cameras				
	SD	STR-150HE	STR-950HE	DTR-150
HD	STR-150AHD	STR-950AHD	DTR-150AHD	STC-300AHD
FHD	STR-150FAHD	STR-950FAHD	DTR-150FAHD	STC-300FAHD

Indoor IR Cameras				
	SD	STR-150HEIR	STR-950HEIR	DTR-150IR
HD	STR-150AHDIR	STR-950AHDIR	DTR-150AHDIR	STC-300AHDIR
FHD	STR-150FAHDIR	STR-950FAHDIR	DTR-150FAHDIR	STC-300FAHDIR

D-TEG Co.,Ltd.

Head Office

D-TEG Co., Ltd. 3F, Jungmin Bldg, 53 Maewha-ro, Bundang-gu, Seongnam, Gyeonggi-do 463-827, Korea
Tel : +82-31-8016-2516 Fax : +81-31-8016-0252 e-mail : dteg@d-teg.com

D-TEG Japan

Shiroichi Bldg. 4F 8-3,5Chome Shinbashi, Minato-ku, Tokyo 105-0004, Japan (東京都港区新橋 5-8-3 代市ビル 4F)
Tel : +81-3-5733-2301 Fax : +81-3-3438-3750 e-mail : iwata@d-teg.com